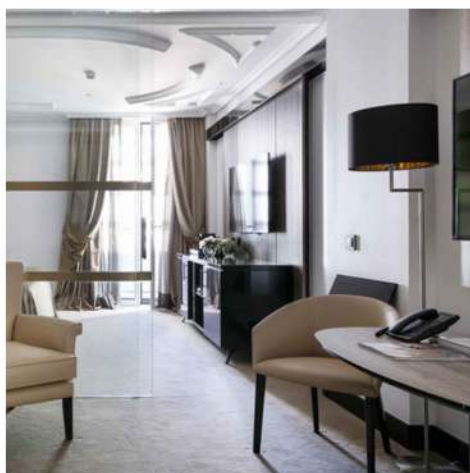
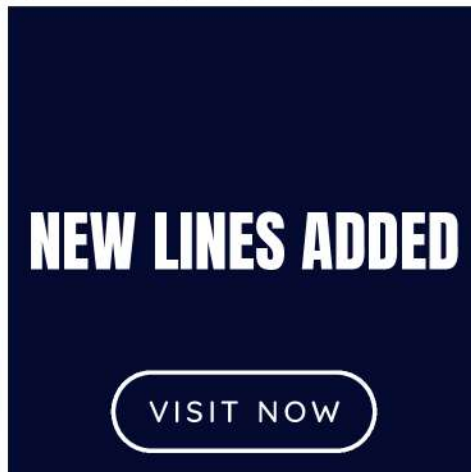


# HOSPITALITY TECHNOLOGY CATALOGUE 2024/25



[hotel-tech.com](https://hotel-tech.com)



Hotel Technology International Limited  
167-169 Great Portland Street  
London W1W 5PF | United Kingdom  
T: +44(0)203 405 1200  
E: [sales@hotel-tech.com](mailto:sales@hotel-tech.com) W: [hotel-tech.com](https://hotel-tech.com)



# HOTEL TECHNOLOGY INTERNATIONAL LTD

ANALOGUE & IP PHONES

CLOCK RADIOS

DIGITAL ROOM STATUS SIGNS

ROOM STATUS PLATES

MEDIA PANELS

INTEGRATED PAYMENT SOLUTIONS

WIRELESS Qi-CHARGING SOLUTIONS



Voted  
'Best Hospitality Technology  
Specialists 2023'

Accor \* Adagio \* Banyan Tree \* Best Western \* Camden Court  
Clayton Hotels \* Club Med \* Coral Doha \* Coral International  
Conrad London \* Courtyard Marriott \* Cumberland \*  
Crowne Plaza \* Dorchester \* Double Tree by Hilton \*  
Gran Meliã \* Grosvenor House \* Hilton \* Holiday Inn \*  
Hilton Garden Inn \* Hotel Indigo \* Hyatt Regency \* Ibis \*  
Innside Meliã \* Intercity \* Intercontinental \* Jumeirah \*  
Kempinski \* Le Royal Meridien \* Maldron \* Marriott \* Meliã  
Mövenpick \* Radisson \* Ramada \* Raviz \* Savoy London \*  
Sheraton \* Staybridge \* Steigenberger \* The Ritz \*  
Virgin Hotels \* Westin \* Wyndham

Visit  
[hotel-tech.com](https://www.hotel-tech.com)



# INDEX

## ANALOGUE PHONES

ACE Nordic Series	6-8
COTELL Aurum Series	9-11
COTELL Fuego Series	12-15
COTELL TE Series	15-17
COTELL Nova	18
ACE Series	19-29

## IP PHONES

Cotell Aurum IP	30-36
ACE IP	37-46

## ALARM CLOCKS

Homtime C1	47
Homtime C1 Pro	48
Harmony Qi Wood Effect	49

**see more alarm clocks online**

## MEDIA PANELS

Harmony Megahub	50
Harmony Microhub	51

**see more media panels online**

## WIRELESS QI-CHARGING

Qi-Charging Solutions	5
-----------------------	---

## FACEPLATE DESIGN

Faceplate Design Solutions	52
----------------------------	----

## DOOR LOCKS

Tesa ASSA ABLOY	53
-----------------	----

## ALSO ONLINE

Light Switches & Room Control  
Digital Door Signs for Hospitality



**FIND US ONLINE**  
**WWW.HOTEL-TECH.COM**  
**E: sales@hotel-tech.com**



# GLOBAL DELIVERY OF FIRST CLASS HOSPITALITY TECHNOLOGY

'Best Hospitality Technology  
Specialists 2023'



## Why Hotel Technology International Ltd is No1

### EXPERTISE

Our teams have in-depth industry knowledge and can help you choose products that will maximise your hotel's style and budget.

### QUALITY

Cotell and ACE (formerly Vivo) are recognised by the hospitality industry as brands that deliver features to enhance the guest experience and improve service levels.

### TRUST

All Hotel Technology International Ltd products are designed to the highest standards and come with full warranties.

### FEATURE-RICH BRANDS

Visit our website: [www.hotel-tech.com](http://www.hotel-tech.com) to see the broad range of approved guest technology designed for hotels we are able to offer.

### SERVICE

A dedicated Account Manager will work with you to ensure your project goals are met. Plus you get to choose your own faceplate designs.



**FIND US ONLINE**  
**WWW.HOTEL-TECH.COM**  
**E: [sales@hotel-tech.com](mailto:sales@hotel-tech.com)**

# Wireless Qi-Charging Pads



## Robust Wireless Charging Solutions for Hotels



## Choice of Colours



## Customised and Off-the-Shelf Solutions

**Convenient \* Aesthetically Appealing \* Safe & Quality Assured \* Cost-effective \* Minimalist**

Wireless Qi charging is not only practical, it is also cost efficient. There are no exposed electrical connections to wear out or break, and charging pads are also watertight with no moving parts. This makes them hygienic and robust.

### Available Materials

Leather or PU

### Colour Options

Black, Dark Brown, Light Brown, Red

**Hotel Technology International Limited** offers stand-alone wireless Qi charging pads that can be placed on any flat surface, such as a bedside table or writing desk. Not only does the charging pad serve as a protective layer for furniture, the charging pad provides a fast and convenient wireless charging option to hotel guests.

Customised solutions are also available and can be integrated into existing furniture.



**FIND US ONLINE**  
**WWW.HOTEL-TECH.COM**  
**E: sales@hotel-tech.com**





Part Code  
VN200A(1S)SP

## ACE Nordic Analogue Guest Phone

### Premium Features

- Analogue Telephone compatible with all major PBX/PABX telephone systems
- Smart Design Format
- 6 One-touch Guest Service Keys
- Single line
- Ringing light
- Adjustable Handset Volume
- Redial and flash keys



Bathroom model also available

### Appearance & Fittings

- High Quality Plastic Casing
- Matte Finish
- Colour Options: Black with Silver trim
- 6 Guest Service Keys

### HIGHLIGHTS

#### VN200A(1S)SP

Analogue, small footprint hotel guest room phone, single line, redial, volume, single light, ringing light.  
0-6 Guest Service Keys





Part Code  
VN300A(1S)SP

## ACE Nordic SL Desk Phone

### Premium Features

- Analogue Telephone compatible with all major PBX/PABX
- telephone systems
- Desk Phone
- Smart Design Format
- Single line
- Ringing light
- Adjustable Handset Volume
- Pause, Flash and Redial

### Appearance & Fittings

- High Quality Plastic Casing
- Matte Finish
- Colour Options: Black with Black, Gold or Silver trim

### HIGHLIGHTS

#### VN300A(1S)SP

Analogue, small footprint hotel guest room phone, single line, redial, volume, single light, ringing light.





Part Code  
VN100A(1S)

## ACE Nordic Analogue Bathroom Phone

### Premium Features

- IP Phone that is Desk/ wall mountable
- 1-3 Programmable Memory Keys
- Smart Design Format
- Heat and Steam Resistant - suitable for bathroom usage
- Ringer volume control
- High immunity to electro magnetic radiation
- Anti noise high sound quality
- Redial, hold, mute and flash

### Appearance & Fittings

- High Quality Plastic Casing
- Matte Finish
- Colour Options: Black , White or Green

### HIGHLIGHTS

#### VN100A(1S)

Single line analogue trim hotel bathroom or lobby telephone with pause, flash and redial.







Part Code  
AU2080A(1S)SP

## Cotell Aurum Hospitality Phone

### Premium Features

- Single line analogue phone compatible with all major pbx/pabx systems
- 0-6 programmable Guest Service Keys
- Message Waiting Light Neon Indicator (MWL)
- Full-length faceplate for customisation, guest key icons, logo/branding, and dual-lingual dialling instructions
- Adjustable speaker and handset volume with mute
- Adjustable ringer volume
- Hold, redial and flash keys
- Adjustable flash-hook timing
- Pass-through data port
- USB charging (optional)

### Appearance & Fittings

Weighted solid cast aluminium stand  
Colour options, black  
Screen printed acrylic faceplate (optional)

### HIGHLIGHTS

AU2080A(1S)SP Single line analogue phone with 1-6GSK, redial, hold, mute and flash, ringer volume control, adjustable flash-hook timer.





Part Code  
AU2080AW(1S)SP

## Cotell Aurum Analogue Cordless Phone

### Premium Features

- Single line analogue phone compatible with all major pbx/pabx systems
- 1-6 programmable Guest Service Keys
- 1.8/1.9 Ghz frequency band
- Base and handset dialling capability
- Secured digital transmission
- Redial capability for both base and handset
- Hold on base and handset
- Surface mount technology with CPU control
- Full length customizable
- High immunity to electronic radiation
- Adjustable flash-hook timer
- Handset and speaker volume control
- Ringer volume control
- Redial, hold, mute and flash
- Optional +5V/2.1A USB Charger

### Appearance & Fittings

Matte finished high quality plastic casing

Standard Matte Finish: Black

Optional coloured rim

### HIGHLIGHTS

#### AU2080AW(1S)SP

Single line analogue phone with 1-6GSK, redial, hold, mute and flash, ringer volume control, adjustable flash-hook timer..





Part Code  
AU2066A(1S)E

## Cotell Aurum 2066A(1S)E- 3 Guest Button Hospitality Phone

### Premium Features

- Single line analogue phone compatible with all major pbx/pabx systems
- Surface mount technology
- 1-3 programmable Guest Service Keys
- Ringer volume control
- High immunity to electro-magnetic radiation
- Anti-noise high sound quality
- Handset Volume Control
- Function Keys:
  - Redial, Hold, Mute & Flash
- Small footprint - suitable for areas where space is limited
- Steam resistant

### Appearance & Fittings

Matte finished, high quality plastic casing  
Matte Black, Matte White (optional), Dark green  
Black Plastic Base  
Screen printed acrylic faceplate (optional)  
1-3 Guest Service Keys

### HIGHLIGHTS

#### AU2066A(1S)E

Single line analogue phone with 1-3GSK, redial, hold, mute & flash, handset volume control, anti-noise, high sound quality.







Part Code  
FG1088A(1S)SP

## Cotell Fuego SmartStation Hotel Phone

### Premium Features

- Analogue Speakerphone compatible with all major
- PBX/PABX telephone systems
- 1 line speakerphone models
- 0-10 Programmable Guest Service Keys
- Message Waiting Light Neon/LED Indicator (MWL)
- Full-length Faceplate for customisation, guest key icons, logo/branding
- Adjustable Speaker and Handset Volume with Mute
- Hold, Redial and Flash keys
- Adjustable Flash-Hook timing
- Data PortAcrylic Stand
- High quality plastic casing: Black
- Custom printed faceplate

### Appearance & Fittings

- Rugged Plastic Stand
- High Quality Plastic Casing: Black or Ivory
- Standard Paper Faceplates with Overlay
- Hi-Grade Screen-printed Polycarbonate Faceplates (optional)

### HIGHLIGHTS

#### **FG1088A(1S)SP**

Fuego SmartStation (analogue) 1-line Speakerphone with 0-10 Guest Service Keys, Flash, Redial, Hold, Mute, Volume Control, MWL, in Black or Ivory.





Part Code  
FG1088AW(1S)SP

## Cotell Fuego SmartStation Cordless Phone

### Premium Features

- Analogue Speakerphone compatible with all major PBX/PABX
- Single line
- Crystal clear interference-free Digital Enhanced Cordless (DECT) Technology
- 2.4 Ghz Operating Frequency
- Supports up to 3 Additional "CordlessStation" Handsets per base
- Long-life NiMH Rechargeable Battery
- Handset locator/paging function
- Rapid recharging and charging light indicator
- 6 hour talk time
- 14 day standby time
- 60 metre/200ft Handset range
- LCD Caller ID Display (option)

### Appearance & Fittings

- Rugged Plastic Stand
- High Quality Plastic Casing: Black
- Standard Paper Faceplates with Overlay
- Hi-Grade Screen-printed Polycarbonate Faceplates (option)

### HIGHLIGHTS

#### **FG1088AW(1S)SP**

Fuego SmartStation Cordless DECT (analog) 1-line Speakerphone with 0-10 Guest Service Keys, Flash, Redial, Hold, Mute, Volume Control, MWL.







Part Code  
FG1088AW(1S)SP  
-1.8GHz

# Cotell Fuego SmartStation Cordless 1.8GHz Phone

## Premium Features

- Analogue Speakerphone compatible with all major PBX/PABX
- Single line
- Crystal clear interference-free Digital Enhanced Cordless (DECT) Technology
- 1.8/1.9 (DECT 6.0) Ghz Operating Frequency
- Supports up to 3 Additional "CordlessStation" Handsets per base
- Long-life NiMH Rechargeable Battery
- Handset locator/paging function
- Rapid recharging and charging light indicator
- 6 hour talk time
- 14 day standby time
- 60 metre/200ft Handset range
- LCD Caller ID Display (option)

## Certifications & Manufacturing

- ISO9001 Quality Assured Manufacturing
- ISO14001 Environmentally Approved Manufacturing
- CE, FCC, CCC Approved Product
- RoHS Certified
- FCC: Complied with parts 15 and 68 of FCC rules

## Premium Features contd

- High quality speakerphone
- 0-10 programmable guest service keys on base
- 1 programmable guest service key on handset
- Message waiting light Neon/LED Indicator (MWL)
- Adjustable Speaker and Handset Volume with Mute
- Adjustable Ringer Volume
- Hold, Redial and Flash Keys
- Adjustable Flash-Hook Timing
- Pass-through Dataport

## Environmental

- Temperature: 25°C +/- 10°C
- Humidity: 65% +/- 20%
- Weight: 1.20kg (TBC)
- Footprint: 22 x 16 cm (TBC)







Part Code  
FG1080A(1S)SP

## Cotell Fuego SmartStation SL Hotel Phone

### Premium Features

- Analogue (TDM) phone, compatible with all major PBX/PABX
- Single line
- High quality speakerphone
- 0-6 programmable Guest Service Keys
- Message Waiting Light Neon/LED Indicator (MWL)
- Faceplate for customisation
- Adjustable speaker and handset volume with mute
- Adjustable ringer volume
- Hold, flash and redial keys
- Adjustable flash-hook timing
- Matte finish
- Hi-Grade Screen-printed polycarbonate faceplates (option)

### Appearance & Fittings

- Durable Plastic Stand
- High Quality Plastic Casing: Black or Ivory
- Standard Paper Faceplates with Overlay
- Hi-Grade Screen-printed Polycarbonate Faceplates (option)

### HIGHLIGHTS

#### FG1080A(1S)SP

0-6 guest service keys, hold, flash, redial keys, speaker option and message waiting light indicator.





Part Code  
TE3000A(1S)SP

## Cotell TE3000 Hospitality Phone

### Premium Features

- Single Line
- Analogue
- 0-10 Guest Service Keys
- Handset volume control
- Ringer volume control
- Mute, Hold, Flash & Redial buttons
- Hands-free Speakerphone
- Auto configurable message light indicator
- Full length faceplate
- Desktop or Wall Mounted
- Small footprint

### Appearance & Fittings

- Durable Base Stand
- Premium Matte Acrylic Finish: Black, Silver

### HIGHLIGHTS

#### TE3000A(1S)SP

Analogue hotel guestroom phone features 0-10 guest service keys, handset volume control, ringer volume control, mute, hold, flash & redial buttons, hands-free speakerphone.





Part Code  
TE3000A(1S)SP-USB

## Cotell TE3000-USB Hospitality Phone

### Premium Features

- Single Line
- Analogue
- 0-10 Guest Service Keys
- Handset volume control
- Ringer volume control
- Mute, Hold, Flash & Redial buttons
- Hands-free Speakerphone
- Auto configurable message light indicator
- Full length faceplate
- Desktop or Wall Mounted
- Small footprint

### Optional USB

- Dual +5V/2.1A USB Charger

### Appearance & Fittings

- Durable Base Stand
- Premium Matte Acrylic Finish: Black, Silver

### HIGHLIGHTS

#### TE3000A(1S)SP-USB

Analogue hotel guestroom phone features 0-10 guest service keys, handset volume control, ringer volume control, mute, hold, flash & redial buttons, hands-free speakerphone.







Part Code  
CH928A(1S)SP

## Cotell Nova Hospitality Phone

### Premium Features

- Economical price
- Analogue
- Single line models
- Up to 8 guest service keys
- Speakerphone (SP models only)
- Handset volume control
- Ringer volume control
- Hold, Flash & Redial keys
- Message Waiting Light (MWL)
- Customisable faceplate
- Dataport
- Adjustable handset volume
- Small footprint

### Appearance & Fittings

- Ash/
- Ivory/Black
- Customised options must be specified

### HIGHLIGHTS

#### CH928A(1S)SP

Analogue 1-line Speakerphone with 0-8 Guest Service Keys, Flash, Redial, Hold, Mute, Volume Control, MWL





Part Code  
V2500+5A(1S)SP

## ACE Media Plus 5 Guest Room Phone

### Premium Features

- Single line Analogue Phone
- 5 programmable Guest Service Keys
- FM radio
- LCD clock with alarm & snooze functions
- Programmable flash time
- Push button keypad on handset
- Ringer/ in-use LED indicator
- Bluetooth and audio-in music players
- Battery back up
- Customisable faceplate
- Available in black or ivory
- USB port as Standard

### Call Features

- Hold
- Flash
- Redial
- Call mute with indicator
- Adjustable talk and ringer volume
- Up to 5 guest service keys

### HIGHLIGHTS

#### V2500+5A(1S)SP

Analogue hotel guestroom phone, with LCD alarm clock, USB charging, single line, Hold, Redial, Flash, Mute, Adjustable Volume





Part Code  
V8000A(1S) SP

## ACE Select Room Phone

### Premium Features

- Analogue speakerphone compatible with all major
- PBX/PABX telephone systems
- 1 line speakerphone models
- 0-10 programmable guest service keys
- Message waiting light Neon/LED indicator (MWL)
- Faceplate customisation available; guest key icons, logo/branding
- Adjustable speaker and handset volume with mute
- Hold, mute, redial and speaker phone.

### Appearance & Fittings

- Rugged plastic stand
- High quality plastic casing: single colour: black only
- Standard paper faceplates with overlay
- High-grade screen-printed polycarbonate faceplates (option)

### HIGHLIGHTS

#### V8000A(1S)SP

Analogue hotel guestroom phone with speaker, single line, 10 GSK, hold, redial, flash, MWI, adjustable volume.

V8000AW(1S)SP Cordless DECT version







Part Code  
V8000AW(1S) SP

## ACE Select Cordless DECT Room Phone

### Premium Features

- Analogue speakerphone compatible with all major
- PBX/PABX telephone systems
- single line cordless DECT phone
- 0-10 programmable guest service keys
- Message waiting light Neon/LED indicator (MWL)
- Faceplate customisation available; guest key icons,
- logo/branding
- Adjustable speaker and handset volume with mute
- Hold, mute, redial and speaker phone.

### Appearance & Fittings

- Rugged plastic stand
- High quality plastic casing: single colour: black only
- Standard paper faceplates with overlay
- High-grade screen-printed polycarbonate faceplates (option)

### HIGHLIGHTS

V8000AW(1S)SP Cordless DECT phone





Part Code  
V2300A (1S) SP

## ACE Zeppa Corded Room Phone

### Premium Features

- Analogue speakerphone compatible with all major PBX/PABX telephones
- Single line
- 5 Guest Service Keys
- Hold, redial, flash, mute, call waiting indicator

### Appearance & Fittings

- Matte finish
- 0-5 programmable guest service keys
- Message waiting light Neon/LED indicator (MWL)
- Faceplate for customisation, guest key icons, logo / branding
- Adjustable speaker and handset volume with mute
- Adjustable ringer volume
- Hold, redial, and flash key

### Call Features

- Call hold
- Call flash
- Call waiting indication
- Call mute
- Last number redial

### HIGHLIGHTS

#### V2300A(1S)SP

Analogue guestroom phone with speaker, single line, 5 GSK, Hold, Redial, Flash, Mute, Call Waiting Indicator





Part Code  
V89A(1S)SP

## V89 Analogue Room Phone

### Premium Features

- Analogue Speakerphone compatible with all major
- PBX/PABX telephone systems
- 1 line speakerphone models
- 0-10 Programmable Guest Service Keys
- Faceplate for customisation, guest key icons,
- logo/branding
- Adjustable Speaker and Handset Volume with Mute
- Hold, Redial and Flash keys
- Adjustable Flash-Hook timing

### Appearance & Fittings

- Rugged Plastic Stand
- High Quality Plastic Casing: Black or Ivory
- Standard Paper Faceplates with Overlay
- Hi-Grade Screen-printed Polycarbonate Faceplates (option)

### HIGHLIGHTS

#### V89A(1S)SP

Analogue hotel guestroom phone with speaker, single line, 10GSK, hold, redial, flash.







Part Code  
V89AM(1S)SP

## ACE V89AM Analogue Room Phone

### Premium Features

- Analogue Speakerphone compatible with all major
- PBX/PABX telephone systems
- 1 line speakerphone models
- 0-10 Programmable Guest Service Keys
- Faceplate for customisation, guest key icons, logo/branding
- Adjustable Speaker and Handset Volume with Mute
- Hold, Redial and Flash keys
- Adjustable Flash-Hook timing

### Appearance & Fittings

- Rugged Plastic Stand
- High Quality Plastic Casing: Black or Ivory
- Standard Paper Faceplates with Overlay
- Hi-Grade Screen-printed Polycarbonate Faceplates (option)

### HIGHLIGHTS

#### V89AM(1S)SP

Analogue hotel guestroom phone with speaker, single line, 10GSK, hold, redial, flash, data port, adjustable volume.





Part Code  
V4500(1D)SP

## ACE 4500 Analogue Display Phone

### Premium Features

- Analog speakerphone compatible with most major PBX/PABX telephone systems
- 1-line speakerphone models
- 0-10 programmable Guest Service Keys
- Message waiting light Neon/LED indicator (MWL)
- Full-length faceplate for customisation, guest key icons, logo / branding
- Adjustable speaker and Handset volume with mute
- Hold, redial, message retrieval and redial

### Appearance & Fittings

- Rugged Acrylic Stand
- High quality plastic casing: Black
- Full length custom printed faceplate

### HIGHLIGHTS

#### V4500A(1D)SP

Alpha analog 1-line Speakerphone with 0-10 Guest Service Keys, Hold, Redial, Message Retrieval, Volume Control, MWL







Part Code  
V2300AW(1S) SP

## ACE Zeppa Cordless Room Phone

### Premium Features

- Cordless analogue DECT telephone with major PBX compatibility
- Available in one and two line models
- Up to 3 handsets can be paired to base
- Crystal clear interference-free Digital Enhanced Cordless Telecommunications (DECT) Technology
- Euro DECT 1.8 GHz
- US DECT 1.9 GHz (DECT 6.0)

### Call Features

- Call hold
- Call flash
- Call waiting indication
- Call mute
- Last number redial

### Appearance & Fittings

- Matte finish
- 0-5 Programmable guest service keys
- Message waiting light Neon/LED indicator (MWL)
- Faceplate for customisation, guest key icons, logo / branding
- Adjustable speaker and handset volume with mute
- Adjustable ringer volume
- Hold, redial, and flash keys

### PBX COMPATIBILITY

Asterisk · Broadsoft · Alcatel · NEC · Avaya basic call features supported.







Part Code  
V2301AMW(1S)SP

## ACE Zeppa Cordless Micro Main Unit

### Premium Features

- Cordless Analogue DECT Speakerphone compatible
- with all major PBX/PABX telephones
- Single line
- Crystal clear interference-free Digital Enhanced Cordless Telecommunications (DECT) Technology
- 1.8/1.9 (DECT 6.0) Operating Frequency

### Call Features

- Call Hold
- Call Flash
- Call Waiting Indication
- Call Mute
- Last Number Redial

### Appearance & Fittings

- Matte Finish
- 0-5 Programmable Guest Service Keys
- Message Waiting Light Neon/LED Indicator (MWL)
- Faceplate for customisation, guest key icons, logo / branding Adjustable Speaker and Handset Volume with Mute
- Adjustable Ringer Volume
- Hold, Redial, and Flash keys

### PBX COMPATIBILITY

Asterisk · Broadsoft · Alcatel · NEC · Avaya  
basic call features supported.





Part Code  
VCA60A(1S))

## ACE Caspian Bathroom/Lobby Phone

### Premium Features

- Analogue Telephone compatible with all major PBX/PABX
- telephone systems
- Trimline Format
- Single line
- Water and moisture proof
- Flash, mute and redial keys

### Appearance & Fittings

- High Quality Plastic Casing
- Matte Finish
- Colour Options: Matte Ivory
- Customised Label

### HIGHLIGHTS

#### VCA60A(1S)

Single line Analogue Trimline bathroom/lobby phone. Water and moisture proof, Flash, Mute & Redial keys





Part Code  
VVE60A(1S)

## ACE Vega Bathroom/Lobby Phone

### Premium Features

- Analogue (TDM) Phone compatible with all major PBX/PABX telephone systems
- Trimline Format
- Wall-Mount
- Water and Humidity Resistant
- Adjustable Handset Volume
- Mute, Flash, Redial Keys

### Appearance & Fittings

- High Quality Plastic Casing
- Matte Finish
- Colour Options: Matte Black, Matte White

### HIGHLIGHTS

#### VVE60A(1S)

Single line Analogue Trimline bathroom/lobby phone. Water and moisture proof, Flash, Mute & Redial keys - 2 colour options.







Part Code  
AU2061A-IP

## Cotell Aurum 2061A-IP SIP Hospitality Phone

### Premium Features

- Supports 1 SIP account
- Supports SIP V2 (RFC3261) protocol
- Supports RFC2833 (RTP payload for DTMF Digits (in band/out band DTMF)
- Supports RFC3264/3489/3515 (Refer)/2327 (SDP)/358113265 (event notification)/3842 (MWI)
- Supports RTP/NTP/DHCP/TFTP/HTTP protocols
- Supported STUN,DNS,PPoE,static IP and DHCP
- Refreshes DHCP when network is connected
- Separated outbound proxy, registrar IP and port
- Configurable SIP port
- Configurable re-registration time
- Inter-digit timeout configurable

### Premium Features continued

- Audio codec supported: G.711a, G.711u, G.723,G.729
- Supports CNG and VAD (on G.723 and G.729)
- Adjustable jitter buffer
- Call hold, call waiting, call transfer
- Supports 3-way conference call
- Last number redial
- Message notification
- Volume up/down, mute microphone/speakerphone
- Allow SIP call log
- Firmware upgrade through TFTP
- Web interface configuration with password
- Configuration backup and restore through web page
- Factory default setting restore

### Appearance

Matte black with metal stand





Part Code  
AU208IP(xS)SP

## Cotell Aurum IP Guest Room Phone

### Premium Features

- Single line analogue phone compatible with all major pbx/pabx systems
- 0-6 programmable Guest Service Keys
- Message Waiting Light Neon Indicator (MWL)
- Full-length faceplate for customisation, guest key icons, logo/branding, and dual-lingual dialling instructions
- Adjustable speaker and handset volume with mute
- Adjustable ringer volume
- Hold, redial and flash keys
- Adjustable flash-hook timing
- Pass-through data port
- USB charging (optional)

### Appearance & Fittings

Matte finished high quality plastic casing  
Standard Matte Finish: Black and White  
Optional coloured rim

### HIGHLIGHTS

AU208IP(xS)SP

IP phone with 1-6GSK, redial, hold, mute and flash, ringer volume control, adjustable flash-hook timer.







Part Code  
AU2080IPW(1S)SP

## Cotell Aurum IP Cordless 6 Guest Button Phone

### Premium Features

- Single line
- IP/SIP
- 1.8/1.9 Ghz frequency band
- Base and handset dialling capability
- Secured digital transmission
- Redial capability for both base and handset
- Hold on base and handset
- Surface mount technology with CPU control
- Full length customizable faceplate
- Auto configurable message waiting indicator lamp
- 1-6 programmable memory buttons
- Adjustable flash-hook timer
- Handset and speaker volume control
- Ringer volume control
- Redial, hold, Mute & flash
- Optional coloured rim
- Small footprint

### Specifications

Power: 220V/110V-9V power adaptor

Temperature: 25°C ± 10°C

Humidity: 65% ± 20%

Weight: 1.0 Kg

Measurement: 23.6 cm x16.5cm x9.5cm

### Appearance & Fittings

Matte finished high quality plastic casing

Standard Matte Finish: Black or white (optional)

Optional coloured rim

### CERTIFICATIONS & MANUFACTURING

ISO9001 Quality Assured Manufacturing

CE, FCC, CCC Approved Product

RoHS Certified

FCC: Complied with Parts 15 and 68 of FCC Rules

2 Year Warranty



Part Code  
AU2080IPW(1S)SP





Part Code  
AU2055W-IP

## Cotell Aurum 2055W-IP Cordless Extension Phone

### Premium Features

- Cordless extension of the host AU2080W-IP
- 3 Guest Service Keys
- One Main unit can have four sub-units, IE in addition to one sub-unit on the main unit, it can be equipped with three additional sub-units
- The handset has a hands-free calling function
- Wireless charging function. The standby time of the handset is more than 5 days, and the continuous talk time is more than 5 hours.
- Alloy base and acrylic panel for logo placement

### Premium Features continued

- Supports SIP 2.0 (RFC3261) and related RFC protocols
- Supports IAX2, support: VAD, CNG
- Coding: G.711A/u, G.723 high/low, G.729a/b, G.722
- Echo cancellation: Supports G.168, hands-free echo cancellation of 96ms
- Supports hands-free full-duplex calls with clear call quality

### Appearance

Matte black with alloy base and acrylic panel for logo placement  
1 Main unit can have 3 additional extension units

Part Code  
AU2055W-IP





Part Code  
AU2066A(1S)

## Cotell Aurum Bathroom/Lobby Phone

### Premium Features

- Single line analogue phone compatible with all major pbx/pabx systems
- 3 programmable Guest Service Keys
- Surface mount technology with CPU control
- High immunity to electronic radiation
- Adjustable flash-hook timer
- Handset volume control
- Ringer volume control
- Redial, hold, mute and flash
- Heat and steam resistant
- Wall mount
- Available in matte black or white

### Appearance & Fittings

- Matte finished high quality plastic casing
- Standard Matte Finish: Black or white

### HIGHLIGHTS

AU2066A

Single line analogue phone with 3GSK, volume control, redial, hold, mute and flash, humidity resistant.





Part Code  
V658A(1S)

## V658A Bathroom/Lobby Phone

### Premium Features

- Single line analogue phone
- Magnetic hook switch
- Wall mountable
- 1 Guest Service Key
- LED for MWI
- Incoming call alert
- Call hold
- Call mute
- Off hook emergency call

### Appearance & Fittings

- High Quality Plastic Casing
- Black Matte Finish

### HIGHLIGHTS

#### V658A(1S)

Single line Analogue Trimline  
bathroom/lobby phone







Part Code  
AU2066AIP(1S)

## Cotell Aurum AU2066AIP Hotel Bathroom/Lobby Phone

### Premium Features

- Single line analogue phone compatible with all major pbx/pabx systems
- 3 programmable Guest Service Keys
- Surface mount technology with CPU control
- High immunity to electronic radiation
- Adjustable flash-hook timer
- Handset volume control
- Ringer volume control
- Redial, hold, mute and flash
- Heat and steam resistant
- Wall mount
- Available in matte black or white

### Codecs & Voice Features

- Supports SIP 2.0 (RFC3261) and related RFC protocols
- Support IAX2, support: VAD, CNG
- Coding: G.711A/u, G.723 high/low, G.729a/b, G.722

### Codecs & Voice Features contd

- Supports SIP domain, SIP authentication (none, basic, MD5) domain name resolution, point-to-point IP calling
- DTMF mode support: SIP\_info, DTMF Relay, RFC 2833

### Appearance & Fittings

- Matte finished high quality plastic casing
- 1-3 Guest Service keys
- Logo placement on handset (optional)
- Standard Matte Finish: Black, white or green

### HIGHLIGHTS

#### AU2066AIP

Single line IP phone with 3GSK, volume control, redial, hold, mute and flash, humidity resistant.





- Entry level IP phone
- Compatible with major platforms
- Easy installation and configuration
- Support for fast ethernet
- Key hospitality call and networking features
- USB Port on base



## ACE V6000IP Phone

### Phone Features

- Call logs with missed calls/ incoming calls/outgoing calls – Max support 600 records (web)
- Dial without registration
- LED light
- Programmable DSS keys
- Action URL/ Active URI
- USB charging port on base

### Networking

- 10/100Mbps Ethernet, dual bridged port for PC bypass
- IP Configuration: Static/ DHCP/ PPPoE
- Network Access Control: 802.1x
- VPN: L2TP/OpenVPN
- VLAN
- Qos

## HIGHLIGHTS

### V6000IP

Contemporary Hotel Phone with USB charging port on base, compatible with major platforms: 3cx, Broadsoft, Elastix, Asterisk, Xorcom. etc



### Call Features

- Call out/ Answer
- Mute/unmute (microphone)
- Call hold/ resume
- Call waiting
- Call transfer (Attended/Unattended)
- Speed dial
- Intercom
- Redial
- Voice Message (on Server)
- Hot Line
- Hot desking
- Web dial

### Audio

- Audio CODEC: G.711a/u, G.723.1, G.726-32k, G.729AB, G.722
- Full-duplex Acoustic Echo Canceller (AEC)
- Voice Activity Detection (VAD)/Comfort Noise Generation (CNG) /
- Background Noise Estimation (BNE) / Noise Reduction (NR)
- Packet loss concealment (PLC)
- Dynamic Adaptive Jitter Buffer up to 300ms
- DTMF: In band, Out-of-Band – DTMF (RFC2833)/SIP INFO

**Part Code  
V6000IP**







- Call logs with missed calls/ incoming calls/outgoing calls – Max support 600 records (web)
- Dial without registration
- LED light
- Programmable DSS keys
- Custom LCD display text and logo
- Action URL/ Active URI
- USB charging port on base
- Caller Display function



Part Code  
V6500IP

## V6500IP Phone

### Phone Features

- Call logs with missed calls/ incoming calls/outgoing calls – Max support 600 records (web)
- Dial without registration
- LED light
- Programmable DSS keys
- Custom LCD display text and logo
- Action URL/ Active URI
- USB charging port on base
- Caller Display function

### Networking

- 10/100Mbps Ethernet, dual bridged port for PC bypass
- IP Configuration: Static/ DHCP/ PPPoE
- Network Access Control: 802.1x
- VPN: L2TP/OpenVPN
- VLAN
- Qos

## HIGHLIGHTS

### V6500IP

Contemporary Hotel Phone with LC Display, USB charging port on base, caller display, compatible with major platforms: 3cx, Broadsoft, Elastix, Asterisk, Xorcom. etc



# ACE V6500IP Phone Continued

## Call Features

- Call out/ Answer
- Mute/unmute (microphone)
- Call hold/ resume
- Call waiting
- Call transfer (Attended/Unattended)
- Speed dial
- Intercom
- Redial
- Voice Message (on Server)
- Hot Line
- Hot desking
- Web dial

## Audio

- Audio CODEC: G,711a/u, G.723.1, G.726-32k, G.729AB, G.722
- Full-duplex Acoustic Echo Canceller (AEC)
- Voice Activity Detection (VAD)/Comfort Noise Generation (CNG) /
- Background Noise Estimation (BNE) / Noise Reduction (NR)
- Packet loss concealment (PLC)
- Dynamic Adaptive Jitter Buffer up to 300ms
- DTMF: In band, Out-of-Band – DTMF (RFC2833)/SIP INFO

Part Code  
V6500IP





- Network time synchronization
- Local contacts
- Remote Phonebook (XML/LDAP,1000 entries)
- Multi-language optional
- Call logs
- Blocked list/ allowed list
- Screen saver
- Personalized ringtone settings
- Screen backlight adjustment
- Memorandum
- SMS service
- Voicemail (MWI)
- Menu encryption settings
- Keypad lock/backlight adjustment
- Volume adjustment



Part Code  
V7000-IPW

## V7000IPW Phone with Bluetooth

### Premium Features

- IP phone / Sip phone
- 2.4" 240×320 color screen with intuitive user interface
- Certified to IP67 standard – waterproof, dustproof and drop safe from 1.8m height
- Built-in dual band WiFi (2.4G)/5G), integrated 802.11 a/b/g/n/ac/ax WiFi (WiFi 6)
- Supports IEEE802.11 11k/v/r roaming
- Supports WPA/WPA2-PSK and 802.1x/EAP encryption to ensure communications security
- Built-in Bluetooth 5.0 can be used to connect headsets/mobile phone and make/answer calls
- 1configurable speed dial push button
- Up to 9 hours talk time
- Up to 200 hours standby time

### HIGHLIGHTS

#### V7000IPW

The V7000IPW is an elegant cordless IP Phone with 4 SIP lines, Caller ID, Bluetooth and up to 9 hours talk time and 200 hours standby time.





# ACE V7000 IPW Phone

## Audio

- Narrowband Codec: G.711a/u, G.729AB, iLBC
- Wideband Codec: G.722, Opus
- Acoustic Echo Cancellation (AEC) – maximum 96ms echo delay cancellation
- Voice Activity Detection (VAD)/ Comfort Noise Generation (CNG)/Background Noise Estimation (BNE)
- Packet Loss Concealment
- Dynamic adaptive jitter cache up to 300ms
- DTMF: In-band, Out-of-band DTMF Relay (RFC2833)

## Network

- Built-in WiFi supports 802.11 a/b/g/n/ac/ax protocol
- 2.4GHz IEEE802.11 b/g/n/ax
- 5GHz IEEE 802.11 a/n/ac/ax
- Encryption: WPA/WPA2-PSK, 802.1x/EAP
- Built-in Bluetooth 5.0 module





Part Code  
V5000IP(1S)SP

## TE5000IP Desk Phone with Dual USB Charging Ports

### Premium Features

- 1 SIP account
- Auto-answer, 3-way conferencing
- Speed dial, SMS, Voicemail
- 10 programmable Guest Service Keys
- Phonebook, Black list, Hands-free indicator
- Ring tone selection/import/delete
- Message Waiting Indication LED
- Volume control
- Dual USB Charging Ports over PoE

### Appearance & Fittings

- High Quality Plastic Casing
- Matte Finish
- Fully customisable polycarbonate faceplates (optional)

### Advanced Voice Features

- XML Phone Book search input & output
- Enterprise phone book (800 series)
- LDAP phone book
- Customisable functions keys
- supported





## ACE 5000IP Desk Phone contd

### Call Features

- Call Hold
- Call Forward
- Call Waiting Indication
- Call Mute
- Call Return
- Call Transfer
- Last Number Redial

### Codecs and Voice Features

- Wideband codec: G.722
- Narrowband codec: G.711  $\mu$ /A, G.723.1
- G.726, G.729a/b, ILBC
- VAD, CNG, AEC, AGC
- Full-duplex

## HIGHLIGHTS

### V5000 IP(1S)SP

VOIP guestroom phone, single line, 10 GSK, redial, flash. speakerphone, dual USB charging ports. Supports Option 66 mass configuration.







Part Code  
V2000IP

## ACE V2000IP Bathroom/Lobby Phone

### Premium Features

- Compact and modern appearance
- Easy installation and configuration
- Economical and environmentally friendly
- Can store 10 shortcut numbers, long press to achieve speed dial
- Adaptive 10/100 Mbps network port, support POE power supply
- Compatible with major platforms, Asterisk, Broadsoft, 3CX, Metaswitch, Elastix, Avaya etc

### Call Features

- Call out/ answer
- Mute/ unmute
- Hands free/ cancel hands free
- Call hold/ resume
- Speed dial/ redial
- Auto answering
- 3 Way conferencing
- Hotline
- Hot desking

### HIGHLIGHTS

#### V2000IP

Compact modern bathroom phone with the ability to store one-touch Memory keys





Part Code  
V1066IP

## ACE Slim IP Bathroom/Lobby Phone

### Premium Features

- SIP (IP) Phone compatible with all
- major PBX/PABX telephone systems
- Trimline Format
- Wall-Mount
- Heat and Steam Resistant
- Sealed "No Hook-Switch" Design
- 1 Programmable Guest Service Key
- Adjustable Handset Volume
- Redial and Flash Keys

### Appearance & Fittings

- High Quality Plastic Casing
- Matte Finish
- Colour: Matte Black or Matte Ivory
- Mini Faceplate/GSK label

### HIGHLIGHTS

#### V1066IP

Trimline Bathroom Phone compatible with all major PBX/PABX telephone systems.





Part Code  
HOM-C1

## Homtime C1 Alarm Clock

### Premium Features

- 3.2 inch, 3 level dimmable LCD large font display
- Double USB port for portable device charging
- Easy set-up alarm clock
- Adjustable alarm volume
- Snooze function
- Thermometer function
- Built in Line-In Aux

### Compatibility & Specifications

- Compatible with Ipad or mobile phone
- AC Power Adaptor
- AC 110-240V, DC 5V 3A
- Size: 108 x 88 x 67mm
- Charging port: Double USB
- Output power: 2W





# Homtime



Part Code  
HOM-C1 Pro

## Homtime C1 Pro Alarm Clock

### Premium Features

- 3.2 inch, 3 level dimmable LCD large font display
- Double USB port for portable device charging
- Easy set up alarm clock
- Adjustable alarm volume
- Built in Bluetooth
- Snooze function
- Thermometer function
- Built in Line-In Aux

### Compatibility & Specifications

- Compatible with Ipad or mobile phone
- AC Power Adaptor
- AC 110-240V, DC 5V 3A
- Size: 108 x 88 x 67mm
- Charging port: Double USB
- Output power: 2W
- Bluetooth version: 2.1
- Output power: 3W + 3W
- Bluetooth Range: 10M





Part Code  
Qi-Wood-Effect

## Qi-Charging Wood-Effect Alarm Clock

### Premium Features

- Qi-Charging
- Time and Date Display
- Temperature Display
- Volume Control
- Alarm Set Control for Monday to Friday and Weekend Only
- USB or Battery Operated Power Supply (3\*AAA or 4\*AAA)



### Colour Options

- Light brown wood effect - light display
- Dark wood effect / dark or green light display
- Black wood effect/ blue or white light display
- White wood effect /blue or white light display





Part Code  
HME4001M

## Harmony Megahub Media Panel

### Features & Specifications

- Brushed Metal Finish
- Touch sensitive indicator
- Plug and Play functionality – autoswitches TV to HDMI and TV to original mode when device is disconnected
- Single HDMI cable for simple installation
- Plays and charges electronic devices via USB, including IPOD, IPAD and IPHONE
- Supports full HD video resolution up to 1080P
- Wall or furniture mountable

### Standard Features

- 2 x single universal power sockets
- HDMI
- USB content and charging
- Audio / Headset jack
- CEC control
- Single HDMI cable for all services

### Available Colours & Finishes

Brushed Metal – black  
 dark golden  
 light golden  
 silver







Part Code  
HM2001M

## Harmony Microhub Media Panel

### Features & Specifications

- Brushed Metal or Tempered Glass Finish
- Plug and Play functionality – autoswitches TV to HDMI and TV to original mode when device is disconnected
- Single HDMI cable for simple installation
- Bluetooth allows wireless music streaming to TV
- Plays and charges electronic devices via USB, including IPOD, IPAD and IPHONE
- Supports full HD video resolution up to 1080P
- Wall or furniture mountable

### Standard Features

- HDMI
- USB Content and charging
- Audio/Headset jack
- Bluetooth
- CEC control
- Single HDMI for all services

### Available Colours & Finishes

Glass – black, champagne, grey, silver, white  
Metal – black, dark golden, light golden, silver





## FACEPLATE DESIGN SERVICE

Promote your services

Choose your branding and colour preferences

Make it easy for guests to use your facilities



*"Hotel Technology International Limited" have been supplying Fahad Al-Bahar Sons Trading Co. (Mitel Networks) Kuwait for a decade or so with Cotell and VIVO hospitality telephone solutions and we would recommend them to any prospective customer for their sales and support services."*

**Thomas Chacko, Division Manager Kuwait City, Kuwait**



**FIND US ONLINE**  
**WWW.HOTEL-TECH.COM**  
**E: sales@hotel-tech.com**

# DOOR LOCKS FROM TESA ASSA ABLOY

NEW

Brought to you by Hotel Technology International in conjunction with Tesa ASSA ABLOY

Adapting to the needs of a digital world with smart, secure and energy- saving digital locking solutions.

## NO MORE QUEUES

Mobile opening allows you to send virtual keys to your guests, giving them the ability to avoid queues at reception.

## MORE CONTROL

Wireless control – real time information and control and remote operations from anywhere.

## SAVES ENERGY

40% reduction in energy consumption due to the use of smart energy savers.

## ADVANCED SECURITY

Most advanced mechanical and electronic security



**THE ONLY INTEGRAL  
ACCESS CONTROL SYSTEM  
FOR HOSPITALITY**

FOR MORE INFO VISIT  
[WWW.HOTEL-TECH.COM](http://WWW.HOTEL-TECH.COM)  
E: [sales@hotel-tech.com](mailto:sales@hotel-tech.com)





# HOTEL TECHNOLOGY INTERNATIONAL LTD

ANALOGUE & IP PHONES

CLOCK RADIOS

DIGITAL ROOM STATUS SIGNS

ROOM STATUS PLATES

MEDIA PANELS

INTEGRATED PAYMENT SOLUTIONS



Voted  
'Best Hospitality Technology  
Specialists 2023'

Accor \* Adagio \* Banyan Tree \* Best Western \* Camden Court  
Clayton Hotels \* Club Med \* Coral Doha \* Coral International  
Conrad London \* Courtyard Marriott \* Cumberland \*  
Crowne Plaza \* Dorchester \* Double Tree by Hilton \*  
Gran Meliã \* Grosvenor House \* Hilton \* Holiday Inn \*  
Hilton Garden Inn \* Hotel Indigo \* Hyatt Regency \* Ibis \*  
Innside Meliã \* Intercity \* Intercontinental \* Jumeirah \*  
Kempinski \* Le Royal Meridien \* Maldron \* Marriott \* Meliã  
Mövenpick \* Radisson \* Ramada \* Raviz \* Savoy London \*  
Sheraton \* Staybridge \* Steigenberger \* The Ritz \*  
Virgin Hotels \* Westin \* Wyndham

Visit  
[hotel-tech.com](https://www.hotel-tech.com)

